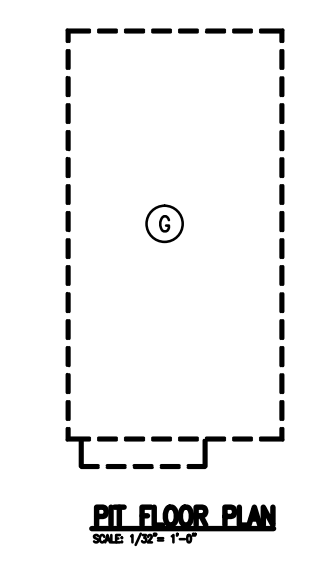
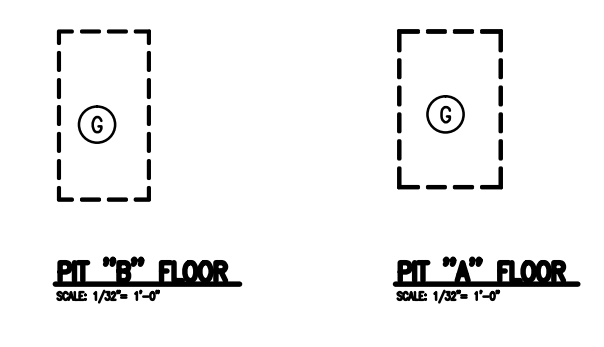


**FIRE PROTECTION FLOOR PLAN**  
SCALE: 1/32" = 1'-0"



**WATER SUPPLY AND DESIGN CRITERIA**

HYDRANT LOCATION: ROAD FRONTAGE  
 STATIC PRESSURE: 145 PSI  
 PILOT PRESSURE: 130 PSI 20 PSI  
 FLOW: 760 GPM 5530 PSI  
 DATE OF TEST: SEPTEMBER 3, 2010  
 CLASSIFICATION OF HAZARDS: AS STATED  
 FLOW REQUIREMENTS: SPRINKLERS AS REQUIRED  
 HOSE STREAM 500 GPM  
 CITY OF ELIZABETHTOWN PRESSURE HYDRANT D-11655 FLOW HYDRANT D-11657

**GENERAL NOTES:**

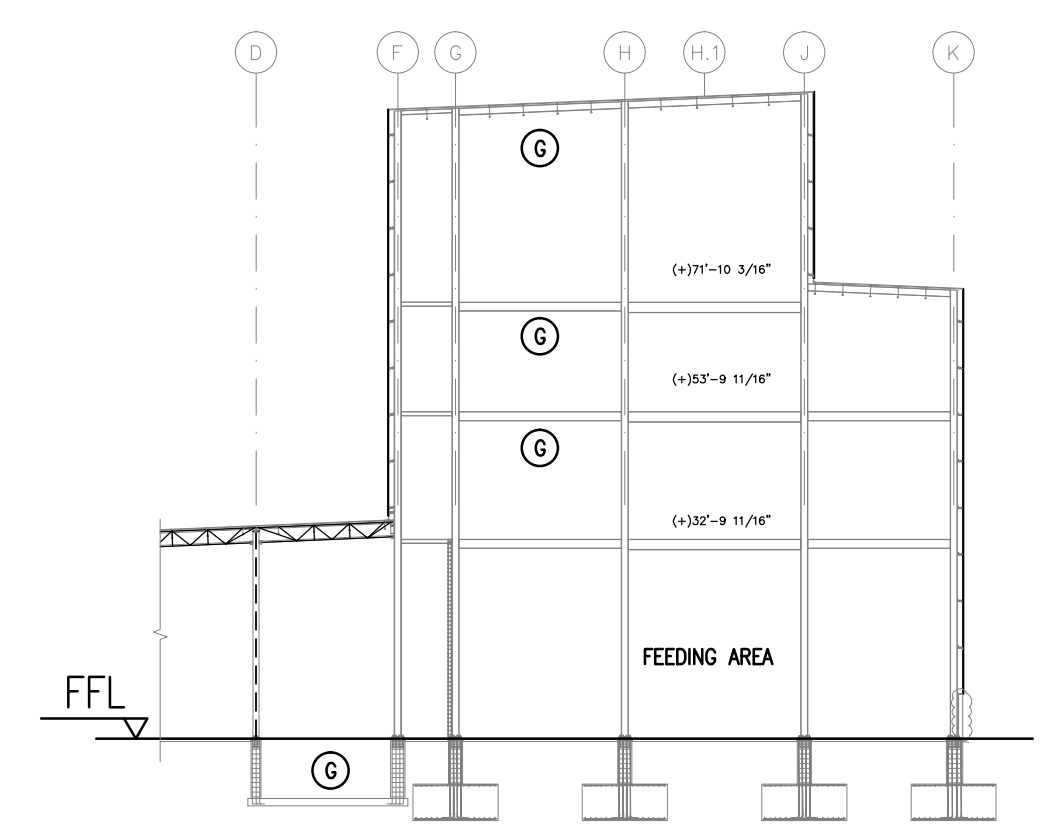
- RISERS ARE SHOWN FOR REFERENCE ONLY. CONTRACTOR MAY USE OTHER LOCATIONS WITH OWNER COORDINATION.
- FLOW SWITCHES, TAMPER SWITCHES, CONDUITS, AND POWER CONDUCTORS SHALL BE INSTALLED BY THE SPRINKLER CONTRACTOR.
- ADDITIONAL RISERS SHALL BE INSTALLED AS NECESSARY. IF A DETERMINATION IS MADE THE AREAS MARKED 'J' WILL REQUIRE A WET OR WET PRE-ACTION SYSTEM. INDIVIDUAL HOSE CABINETS AND HOSE LOOP WILL NOT BE REQUIRED.
- 10" SPRINKLER MAIN IS SHOWN ON THIS DRAWING FOR REFERENCE ONLY. INSTALLATION DETAILS AND HYDRANT LOCATIONS ARE SHOWN ON SITE DRAWINGS.
- SPRINKLER CONTRACTOR SHALL BE RESPONSIBLE FOR SUPPLY OF POWER TO COMPRESSOR AND CONTROL WIRING FOR PRE-ACTION SYSTEMS.

**SHEET NOTES:**

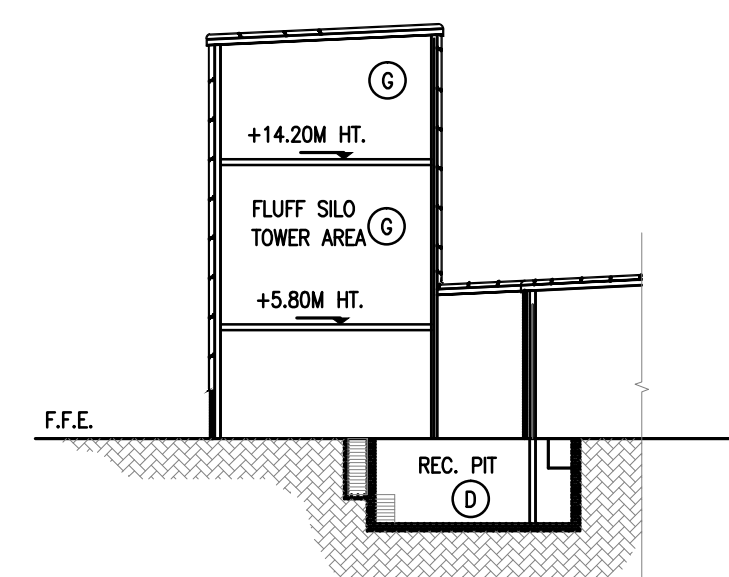
- SEE SITE CIVIL SHEETS FOR EXACT CONFIGURATION OF EXTERIOR SPRINKLER LINES.
- PROVIDE FLOW AND TAMPER SWITCHES IN SPRINKLER PIT.
- RISER A WITH FLOW AND TAMPER SWITCH.
- POST INDICATOR VALVE AND TAMPER SWITCH.
- RISER B WITH FLOW AND TAMPER SWITCH.
- RISER C WITH FLOW AND TAMPER SWITCH.
- RISER D WITH FLOW AND TAMPER SWITCH.
- RISER E WITH FLOW AND TAMPER SWITCH.

**AREA DESIGNATIONS:**

- (A) WOOD PALLET STORAGE, NFPA 13 TABLES 12.12.1.2, A, B, C, OR D LESS THAN 25' HIGH.
- (B) PLASTIC PRODUCT STORAGE, NFPA 13 TABLES 15.4.1 OR 15.2-5 A OR B. 880 TONS OF PRODUCT LESS THAN 25' HIGH.
- (C) PLASTIC PRODUCT STORAGE, NFPA 13 TABLES 15.4.1 OR 15.2-5 A OR B. 330 TONS OF PRODUCT LESS THAN 25' HIGH.
- (D) AREA CLASSIFIED ORDINARY HAZARD GROUP I.
- (E) ELECTRIC & CONTROL EQUIPMENT, FM 200 CHEMICAL SYSTEM.
- (F) PLASTIC PRODUCT STORAGE, NFPA 13 TABLES 15.4.1 OR 15.2-5 A OR B. 55 TONS OF PRODUCT LESS THAN 25' HIGH.
- (G) ORDINARY HAZARD GROUP II.
- (H) LIGHT HAZARD
- (J) DRY SPRINKLER SYSTEM, PRE-ACTION WITH DOUBLE INTERLOCK.
- (K) NOT USED.
- (L) SUPPRESS WITH A DOUBLE INTERLOCK PRE-ACTION SYSTEM. EXTRA HAZARD, GROUP 1.
- (M) SUPPRESS THE SEMI-FINISHED GOODS AREA WITH A WET TYPE SYSTEM PER NFPA 13, 2010 EDITION, CH. 15.4.1 OVER THE AREA AND 20 FT. BEYOND.
- (N) SUPPRESS THE SEMI-FINISHED GOODS AREA WITH A DRY SPRINKLER SYSTEM, PRE-ACTION WITH DOUBLE INTERLOCK, PER NFPA 13, 2010 EDITION, CH. 14.4.1 OVER THE AREA AND 20 FT. BEYOND.



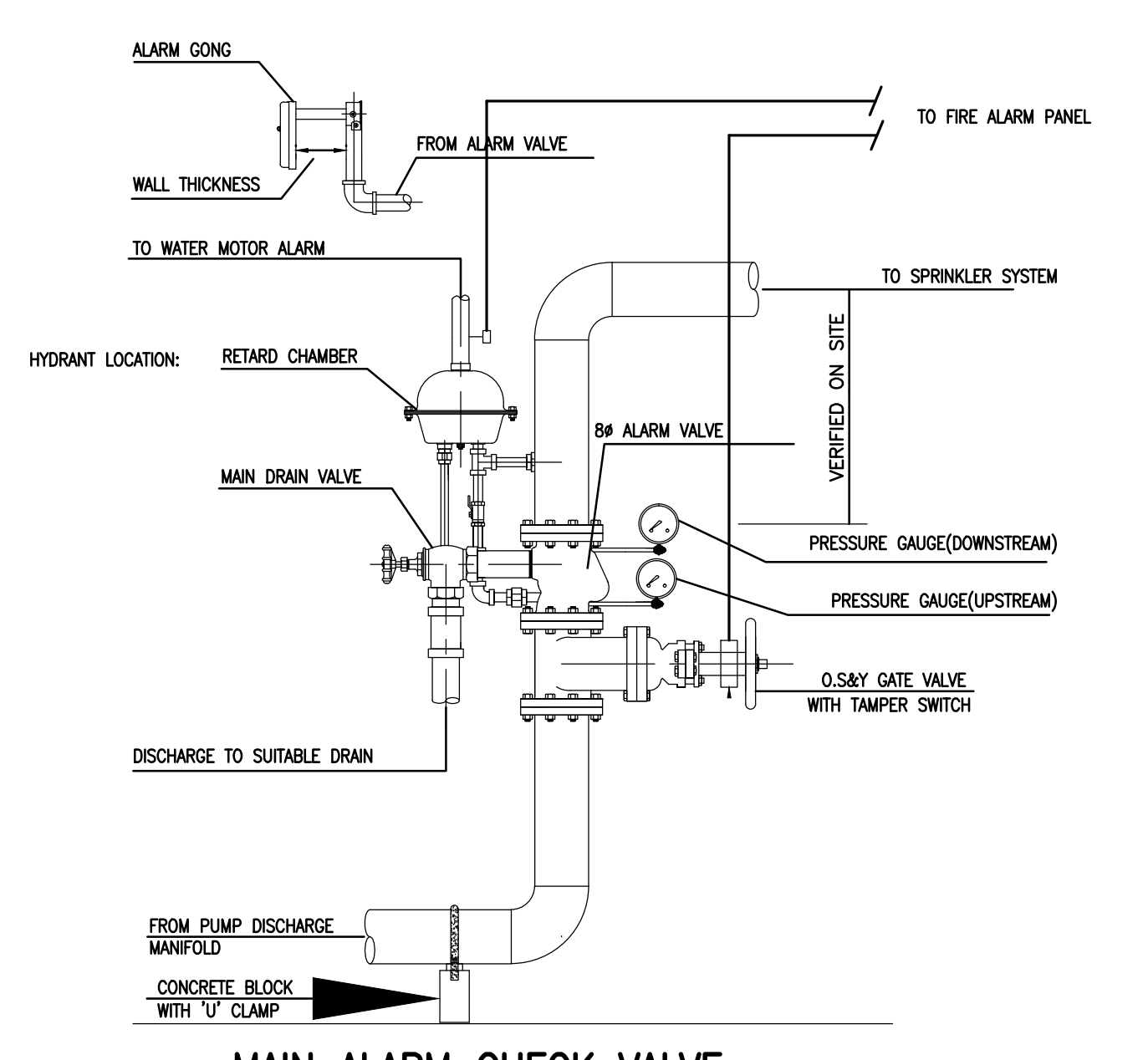
**DRYER TOWER**  
SCALE: 1/32" = 1'-0"



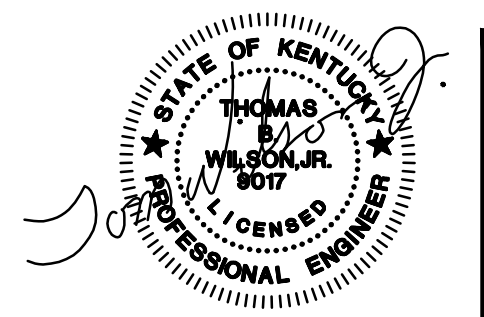
**RECYCLING TOWER**  
SCALE: 1/32" = 1'-0"  
SECTION DOES NOT REFLECT STRUCTURAL DRAWING.

**SPRINKLER LEGEND**

SYMBOL	DESCRIPTION
—	FIRE MAIN
○	SEMI-RECESSED PENDENT STYLE SPRINKLER
×	BRASS UPRIGHT SPRINKLER
⊗	QUICK RESPONSE PENDENT STYLE SPRINKLER
⊕	QUICK RESPONSE SIDEWALL SPRINKLER
⊘	SIDEWALL SPRINKLER
⊙	INSPECTORS TEST CONNECTION
⊚	SPRINKLER RISER ASSEMBLY
⊛	SPRINKLER PIPE UP
⊜	SPRINKLER PIPE DOWN
⊝	SHEET NOTE
⊞	ABOVE FINISHED FLOOR
AFF	



**MAIN ALARM CHECK VALVE**  
SCALE: N. T. S.



**AAI**  
ANNE FROBER-ANDERSON INC.  
ARCHITECTS  
1221 NORTH BLACK BRANCH ROAD  
ELIZABETHTOWN, KENTUCKY 42702  
PROJECT L-12 BOPET U.S.A.

**FLEX**

**FLEXFILMS, U.S.A., LLC**  
1221 NORTH BLACK BRANCH ROAD  
ELIZABETHTOWN, KENTUCKY 42702  
PROJECT L-12 BOPET U.S.A.

DATE	REVISION	BY
NOV. 1, 11	VALUE ENGINEERING RE-DESIGN DOCUMENT	
JAN. 20, 12	REVISION ASSOCIATED WITH RISER FLOOR PLAN	

DESIGN DOCUMENT'S INTENT AND ALL RESPONSIBILITY AND LIABILITY FOR PROBLEMS WHICH ARISE FROM FAILURE TO FOLLOW THESE PLANS, SPECIFICATIONS AND THE DESIGN INTENT THIS COMPANY.  
 This document contains subject matter considered confidential by AISE of Kentucky, Inc. and on which AISE of Kentucky, Inc. has a right to protect the investment of its part thereof and to enforce any information contained therein by means of its legal rights for any purpose which the undersigned permission of AISE of Kentucky, Inc.

PROJECT NO. 8529-02  
 DESIGNED BY ???  
 DRAWN BY ???  
 CHECKED BY ???  
 REVISION BY ???  
 DATE JULY 2011  
 SCALE 1/8" = 1' NOTED

**nse**  
Engineers  
Architects  
Planners  
OF KENTUCKY, INC.  
Phone: (859)223-8694  
824 Wellington Way  
Lexington, KY 40503  
Fax: (859)223-8007  
www.nseinc.com

**DRAWING NO.**  
UFL-L12  
FF-001